

Original

EXTI-SHELTER®

to Serve and to Protect



EXTI-SHELTER

- is made to protect your extinguisher against crush and fire
- keeps your extinguisher proper and ready for use
- is fire-proof
- is break-proof
- is easy to mount

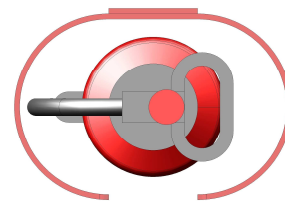
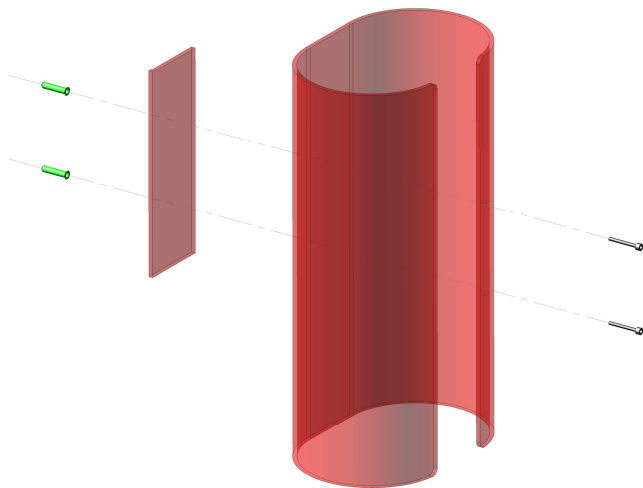
EXTI-SHELTER 6

- for exthinguisher (Volume 6 liter)
- foam, water or powder -

contents:

EXTI-SHELTER 6

- with EXTI-SHELTER base plate
- 2 screws (stainless steel)
- 2 plastic dowels (to drill ϕ 8,0 mm)
- without extinguisher



- size: 300 x 200 x 575 mm

take mesurements of your extinguisher to find hole-position